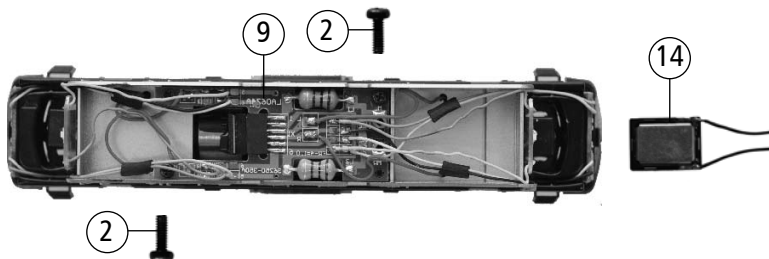
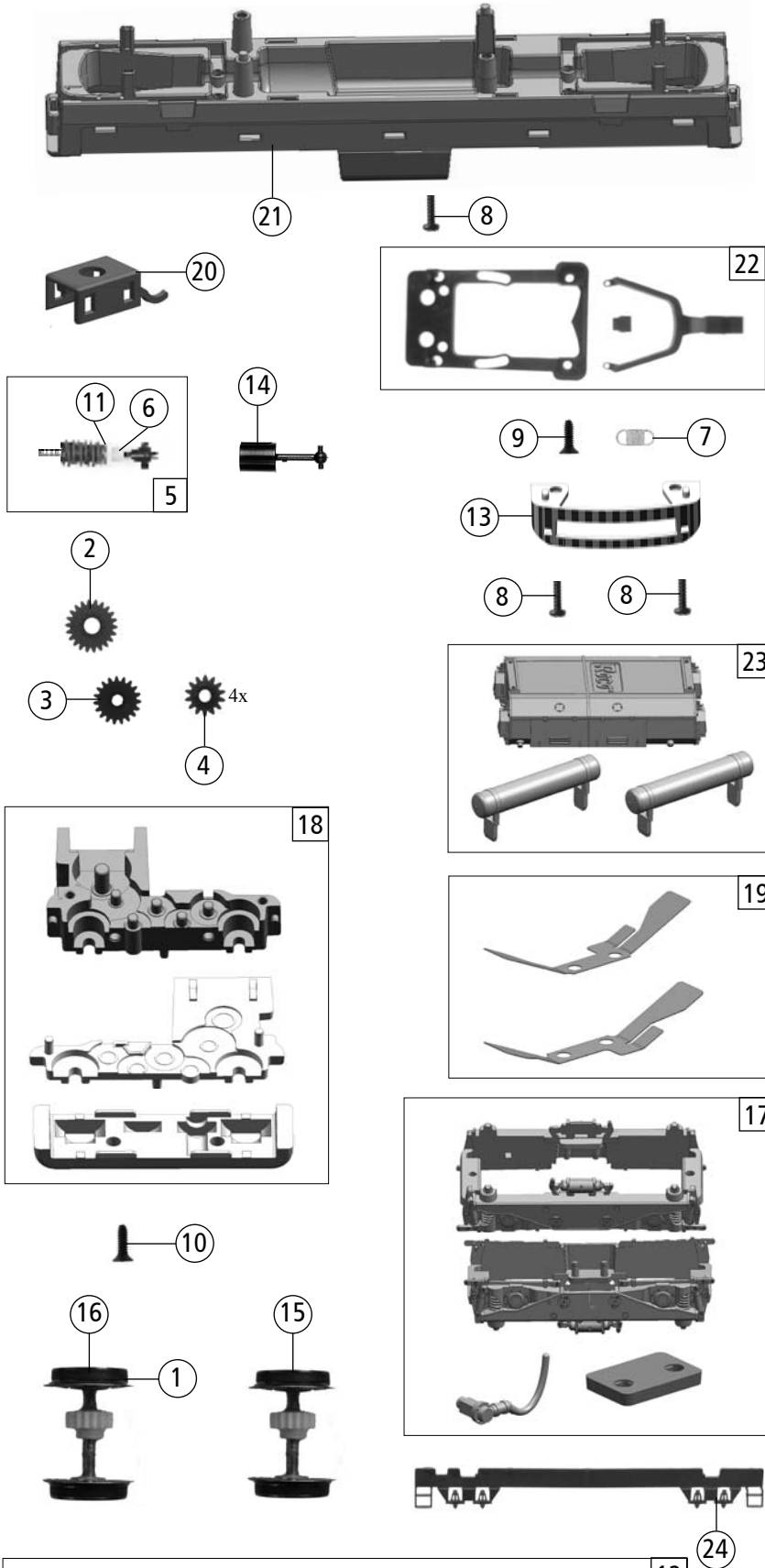


16 o. Abb. / no ill.
Schalkörper
Loud speaker cover

15 o. Abb. / no ill.
Sounddecoder
Sounddecoder



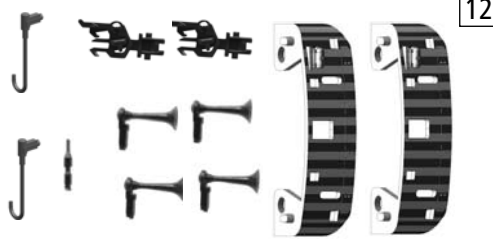
| 36250 | | CSD | T 478.3 | = | |
|---------------------|---|---------------------|------------------------------|---|--|
| 36251 | | | | = | |
| Pos. Nr. Pos.no. | Beschreibung Description | Art.-Nr. Art.no. | Preisgruppe Price bracket | | |
| 1 | Motor Motor | 85144 | 55 | | |
| 2 | GF - Schraube M1,6x4 mm GF - Screw M1,6x4 mm | 114850 | 2 | | |
| 3 | Brückenstecker Connector | 126404 | 12 | | |
| 4 | Gehäuse kpl. Betr.Nr. T 478.3174 Body ass. Loco no. T 478.3174 | 130584 | 66 | | |
| 5 | TS - Fenster Window set | 130234 | 17 | | |
| 6 | Lichtleiter + Lichtnagel Light transm.baar set | 130235 | 5 | | |
| 7 | TS - Führerstand Drivers cab set | 130236 | 15 | | |
| 8 | Puffer rundlich Buffer rounded | 130247 | 2 | | |
| 9 | Platine kpl. mit LED-Platinen Printed circuit with LED circuit | 130258 | 57 | | |
| 10 | Inneneinrichtung Engine interior | 130266 | 7 | | |
| 11 | TS - Gehäuse Part set body | 130586 | 12 | | |
| 12 | TS - Gehäuse Part set body | 130587 | 7 | | |
| 13 | Griffstangensatz Handrailset pure | 130588 | 20 | | |
| Sound 36251 | | | | | |
| 14 | Lautsprecher loud speaker | 129524 | 31 | | |
| 15 | Sounddecoder TT Sounddecoder TT | 129700 | 80 | | |
| 16 | Schalkörper Loud speaker cover | 130289 | 4 | | |



o. Abb. / no ill.

1x TT - Rahmen gross
1x TT - Frame big

1x TT - Frame klein
1x TT - Frame small



| Pos. Nr. Pos.no. | Beschreibung Description | Art.-Nr. Art.no. | Preisgruppe Price bracket |
|---------------------|---|---------------------|------------------------------|
| 36250 | CSD T 478.3 | | |
| 36251 | | | |
| 1 | Haftringsatz 8-10mm 0,3 10 Stk. Set with traction tires 8-10mm 0,3 10 pieces | 85611 | 17 |
| 2 | Schnecken Zahnrad Z=22/12 M=0,3 Worm gear Z=22/12 M=0,3 | 86482 | 3 |
| 3 | Zahnrad Z=19 Gear Z=19 | 86499 | 2 |
| 4 | Zahnrad Z=13 Gear Z=193 | 86518 | 2 |
| 5 | Schneckensatz kpl. Worm gear ass. | 86979 | 24 |
| 6 | Lager für Schneckenachse Bearing for worm axle | 89750 | 4 |
| 7 | Zugfeder Pull-spring | 109832 | 2 |
| 8 | GF - Schraube M1,6x6 GF - Screw M1,6x6 | 114836 | 2 |
| 9 | SK - Schraube M1,6x4 SK - Screw M1,6x4 | 115161 | 2 |
| 10 | SK - Schraube M1,6x5 SK - Screw M1,6x5 | 115317 | 3 |
| 11 | Scheibe Washer | 120735 | 2 |
| 12 | Zurüstbeutel Bag with accessories | 130589 | 18 |
| 13 | Frontschürze Front skirt for running | 130590 | 5 |
| 14 | Kardanwelle ardan shaft | 130250 | 2 |
| 15 | Radsatz m. Zahnrad o. Haftring Wheelset w. gear without traction tyre | 130251 | 18 |
| 16 | Radsatz m. Haftring m. Zahnrad Wheelset w. traction tyre w. gear | 130252 | 20 |
| 17 | TS - Drehgestellblenden Part set bogie | 130592 | 24 |
| 18 | TS - Getriebe 3-teilig Part set gear 3-parts | 130255 | 20 |
| 19 | Radkontaktsatz Wheel contact set | 130256 | 7 |
| 20 | Schneckendeckel Worm cover | 130257 | 4 |
| 21 | Grundrahmen lackiert Base frame coated | 130263 | 25 |
| 22 | TS - Deichsel Part set drawbar | 130264 | 10 |
| 23 | TS - Tank lang + Druckluftbehälter Part set Tank long + compressed air reservoir | 130591 | 12 |
| 24 | Treppensteckteil bedr. Dumper + lader | 130368 | 6 |

Ersatzteile erhalten Sie bei Ihrem Fachhändler, oder Ihrer Landesvertretung:
You can order your Replacement Parts at your local dealer, your country representative: